



A large, vertical, orange sign is mounted on a grey metal structure. The sign features a large, white, stylized gear-like logo at the top, followed by the word "PARAT" in a bold, white, sans-serif font. The sign is slightly tilted and has a black border. The background shows a grey metal ceiling with a yellow light fixture.

PARAT HALVORSEN

IEH COMPACT

A New Plug and Play Solution from PARAT



IEH COMPACT

ALL IN ONE SKID - THE NEW HOT-WATER BOILER

Compact, Efficient, and Easy to Install

The new 5MW Skid-Mounted Electrode Boiler is a compact and fully integrated hot water solution, designed for efficient and reliable heating.

Delivered as a plug-and-play unit, the entire system comes pre-assembled on a single skid, minimizing installation time and engineering requirements.

This innovative hot water boiler is designed to reduce space requirements and simplify integration, making it the ideal choice for industrial and district heating applications.

Why Choose the IEH COMPACT

Reliable & Low Maintenance

The new electrode shape design ensures optimized electrical performance while allowing electrodes to be replaced without entering the boiler, making maintenance quick and hassle-free.

Plug-and-Play Operation

As a standardized solution, the boiler is ready for fast delivery. The pre-assembled skid includes all essential components, allowing for quick installation and immediate operation.

Space-Saving & Easy to Install

The small footprint and lightweight design make it easier to fit into existing facilities. Everything is delivered as a single skid unit, reducing installation time and costs.

Optimized for Your Needs

The system is designed with scalability in mind—the capacity might be increased after initial test runs to meet specific customer requirements.

Technical Specifications

Fully Integrated Skid System

Includes:

- Water treatment unit
- Feed water treatment system
- Blow-down cooling system
- Boiler circulation system
- Heat exchanger
- Design in accordance with PED
- CE Approved



Technical Specifications:

Type: Hot Water Boiler

Output Range 50 kW – 5MW*

Boiler Design Pressure: 12 barg

District Heating Temperature: Up to 140°C

Max Design Pressure: 16 barg

With voltage supply 10-12kV

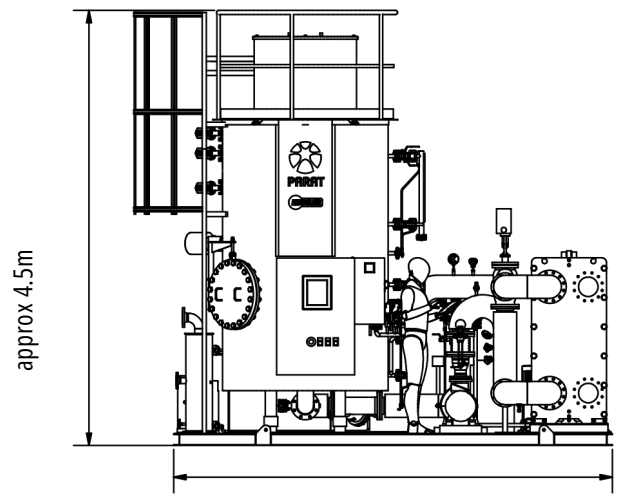
Capacity might be increased after experiences from test run at customer

Simple Connection & Integration

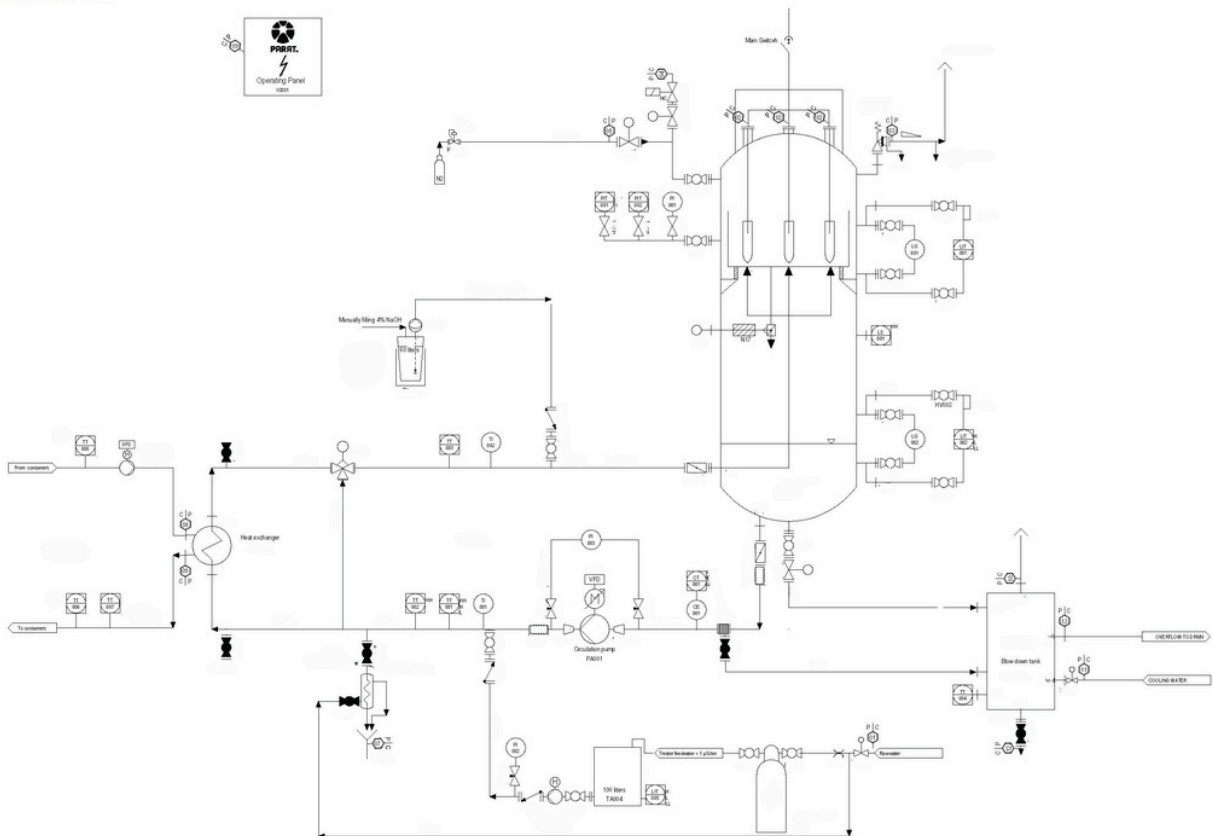
- Medium voltage connection ≤ 12 kV
- Direct district heating integration
- Drain, potable water, and pressure safety valve (PSV) connections
- Instrument air for actuators

Measurements

- Height: 4500 mm
- Length: 4500 mm
- Width: 2490 mm
- Operating Weight: Approx. 8 tons
- Test Weight: Approx. 10,5 tons



4500





ZERO EMISSION HEATING

Yuor partner:



Thermotrade Kft.

H-2112 Veresegyház, Szadai u. 13.

+36 28 588 810

info@thermotrade.hu

www.thermotrade.hu